

E. SYTWIN FOR MULTIFAMILY RESIDENCE IN ŁÓDZ - POLAND



WHERE:

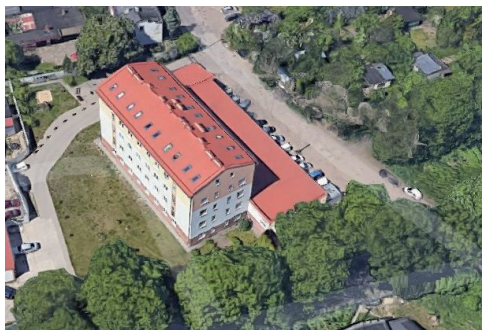
ŁÓDZ' is the third largest city in Poland and a former industrial hub. Located in the central part of the country, it has a population of 688,000. It is approximately 120 KM south-west of Warsaw. The most notable and recognizable landmark of the city is Piotrkowska Street, which remains the high-street and main tourist attraction in the city, runs north to south for over five kilometres. This makes it one of the longest commercial streets in the world. It is the site of most restaurants, bars and cafes in ŁÓDZ'.

WHEN:

October 2018

CONTRACTOR:

KOMBUD



THE REQUEST

Due to the low pressure from the main water distribution the request was for a booster set to serve a multifamily building. The idea of a traditional pressure boosting has changed into a booster set with VFD to avoid problems such as over pressurized system (increases the energy consumption and risk for pipe failures), high noise and vibrations.

The solution was an E.sytwin booster an easy solution with following characteristics:

- All in one booster that includes pump, motor, tank, pressure, pressure and flow sensor controlled by a VFD
- No cable connection (wireless communication)
- Plug and play (all parameters are settled from the factory)
- Easy to install (especially thanks to the special basement)
- A constant pressure of 3.5 bar
- The system has a backup reserve pump if the flow request increases maintaining a constant pressure
- Compact and designed to last
- All components are produced by DAB and certified for potable water
- Energy saving up to 30%
- Low noise level (43 - 47 dB)

